

dsmPlayer

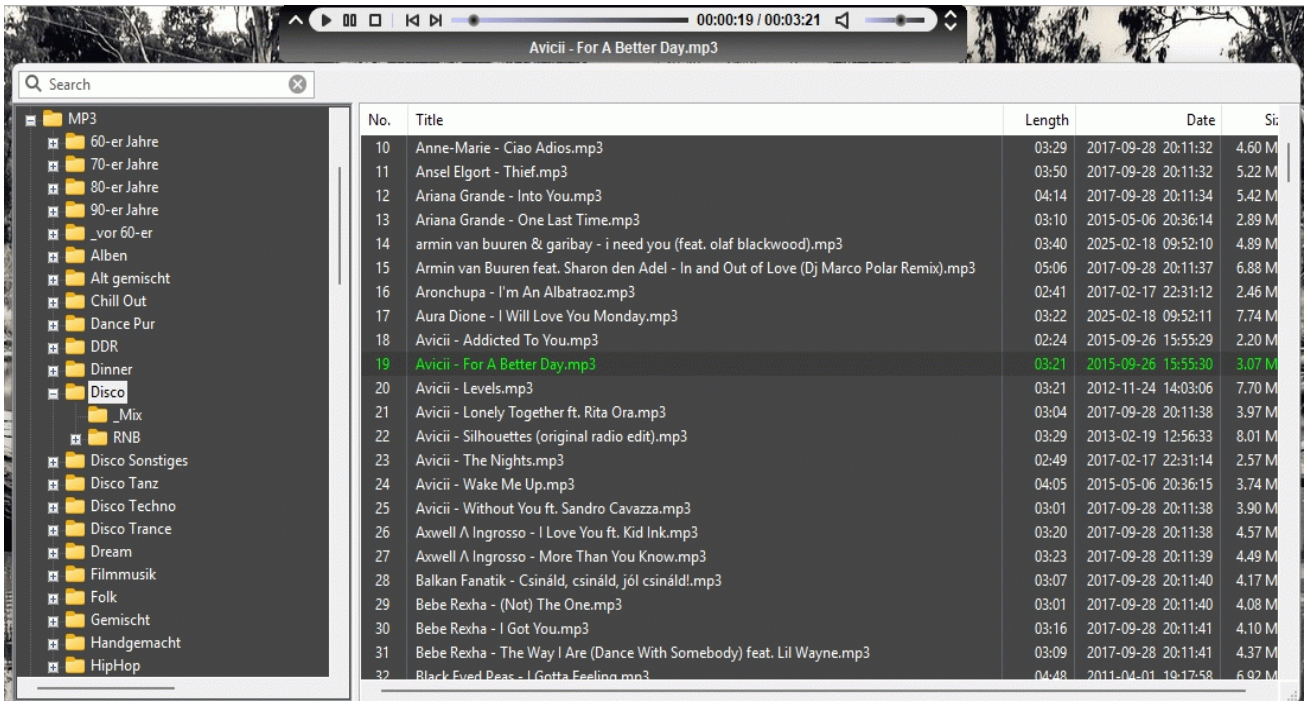
License: GPLv2

Dirk Noack

dirk.noack@wxbasic.de

<https://www.wxbasic.net>

<https://www.forum.wxbasic.de>



dsmPlayer (Duckes simple Media Player) is a small player for playing music and TV both from local files and by streaming from the Internet. It was written entirely in wxBasic and uses for playback from version 0.3 Phiola (<https://github.com/stsaz/phiola>). Please note the restrictions and warnings in the Phiola description.

At the moment only Microsoft Windows OS is supported.

It is not software for managing music collections and was not developed for this purpose. The focus is on playing radio streams without annoying windows.

dsmPlayer was originally developed as a widget for Mhm, a hidden menu program (<https://forum.wxbasic.de/index.php?topic=155.0>), and is now available here as a stand-alone application.

In contrast to previous versions, all control elements are now drawn in the program itself. This means that external icons are no longer required.

A SQLite database with the name "IPTV.db" is used to store the Internet radio and TV stations. By default, the program uses a basic Kodi station list from Ink22's Github repository (<https://github.com/jnk22/kodinerds-iptv>). This has been extended by a few radio stations, some of which unfortunately do not have icon addresses.

The default setting contains approx. 500 radio stations and approx. 330 TV stations. However, the station lists can be expanded to approx. 28,000 radio stations and 10,000 TV

stations from all over the world. The Github repositories from Junguler (<https://github.com/junguler/m3u-radio-music-playlists>) for radio stations and from IPTV-Org (<https://github.com/iptv-org/iptv>) and Free-TV (<https://github.com/Free-TV/IPTV>) for TV stations are used for this purpose.

An IPTV station list contains music and TV addresses together. dsmPlayer splits the lists and uses separate lists for TV and radio for a better overview. To do this, the player uses the specific names of the above-mentioned station lists. This does not necessarily work with other IPTV lists, as each usually uses its own names.

Kodi IPTV lists do not support genres. However, genres are supported in dsmPlayer, so that you can also customize the genres after the import.

If you want to create a new database, delete the existing database. A new database will be created the next time you start the program.

Since wxBasic itself does not support HTTPS, GNU Wget is used as the download program (<https://www.gnu.org/software/wget/>). Wget is not included in dsmPlayer and must be installed separately.

dsmPlayer uses other free software for certain actions (included in the package):

- Phiola (64 bit only)

Phiola is used as a background program for playback, reading the metadata of radio streams, recording radio stations, format conversion, normalizing files and editing ID3 tags.

The advantages are faster loading and playback, more flexibility and less memory consumption.

The disadvantage is that with remote access the volume is no longer in real time, but is slightly delayed when you release the mouse.

But I don't think this is that important.

- Mp3DirectCut (<https://mpesch3.de>)

mp3DirectCut can be used edit your mp3 or aac files. However, another program can also be selected.

Further features:

- Plays local files, Internet radio and acts as a helper for playing TV over the Internet
- Plays aac, flac, mp3, m4a, ogg, opus, wav, wv, mpc
- Plays sound stream from mkv, webm, mp4, mov, avi and ts
- Free positioning of the station list on the screen
- Recording tracks from the Internet Radio
- Autoplay at startup
- Minimization in the tray
- Hiding the player
- Favorites list for Internet radio
- Export Internet playlists
- Validate Internet playlists
- Sort Internet playlists
- Displaying station logos

- Search for stations in the station list
- Reading local playlists
- Track mix for local playlists
- Deleting local titles
- Batch renaming of local tracks (2 versions)
- Batch conversion to ogg, opus, flac, m4a and wav
- Batch normalization of mp3, ogg, opus and flac
- Editing of ID3 tags in mp3, ogg and flac
- Saving the Internet playlists in a database
- Multilanguage support (currently only English and German)
- Portable, only one configuration is saved in the program directory

To do:

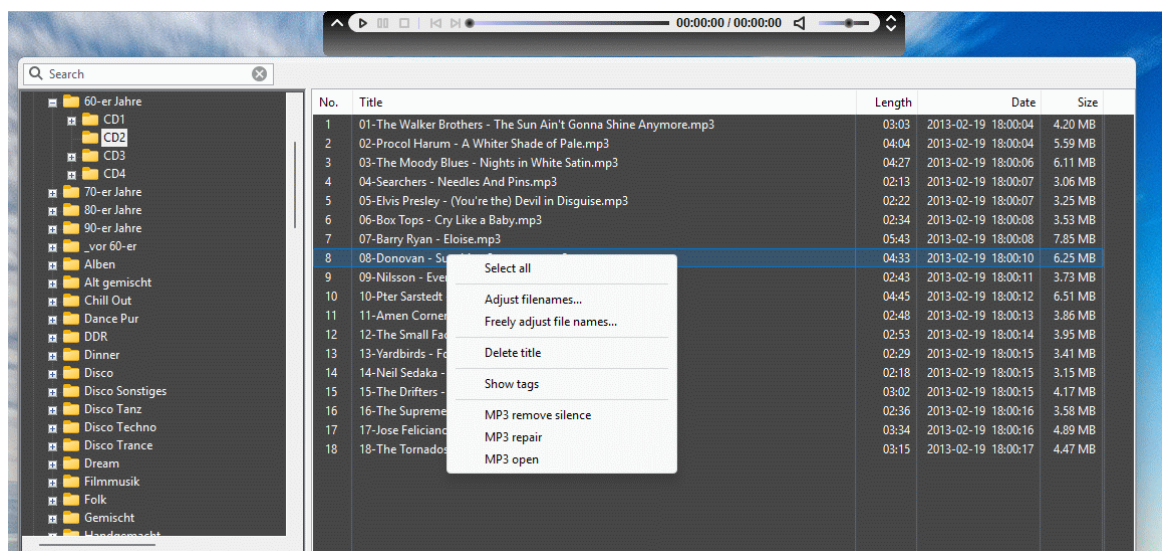
- More options for recording (dependent on Phiola)

Restrictions:

- Only 1 genre can be specified per station. If more than one genre applies to the station, the station with the other genre must be added.
- Phiola is currently only available as a 64 bit program.

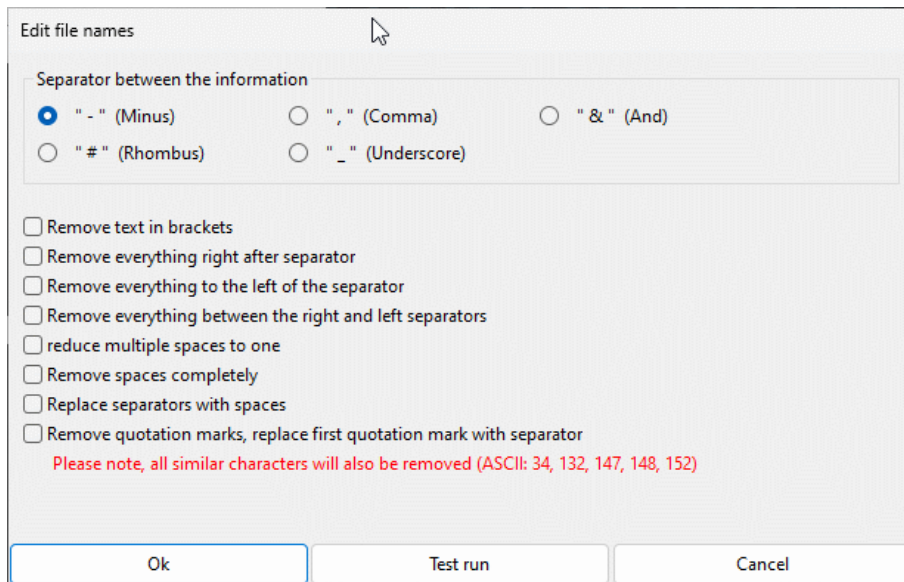
1. The playlist

The playlist is shown or hidden using the left arrow in the player.



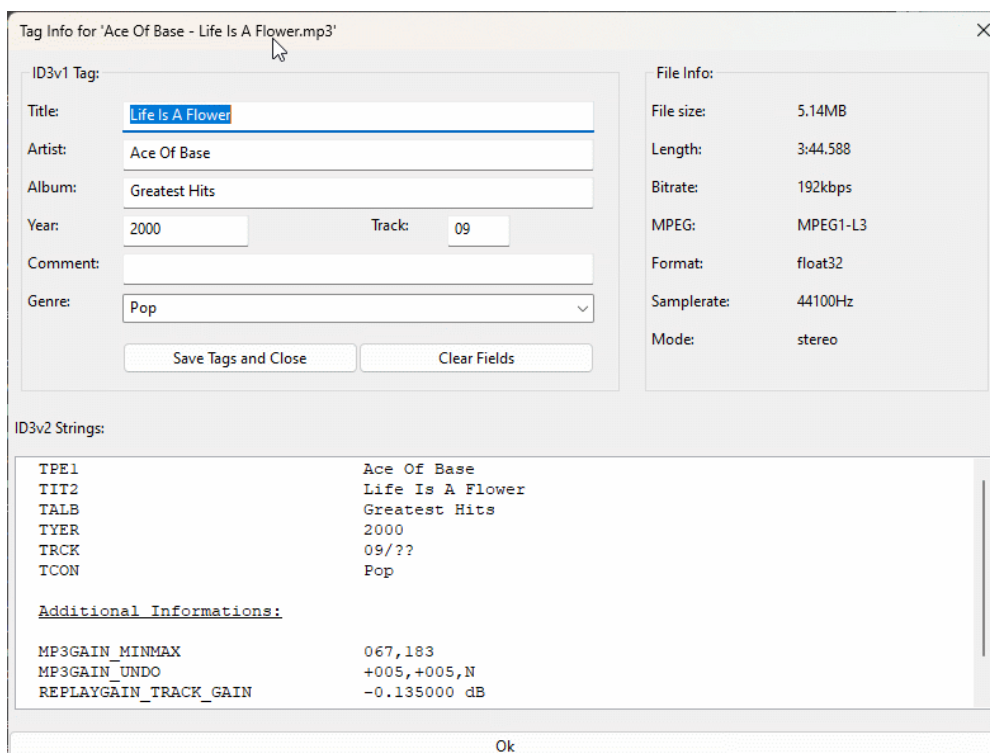
In file mode, dsmPlayer works as a directory player. You can click through the individual directories and play files. It also supports m3u playlists. A menu can be called up with the right mouse button. The following actions are possible here:

- Select all
- Customize file names (selected files)



Various options for batch renaming the selected files are available here. A test run can be carried out before applying the changes. This gives you the opportunity to adjust the settings again if they are missing.

- Freely customize file name (current file only)
- Delete title (**Attention! The file cannot be restored!**)
- Show and edit Tags...

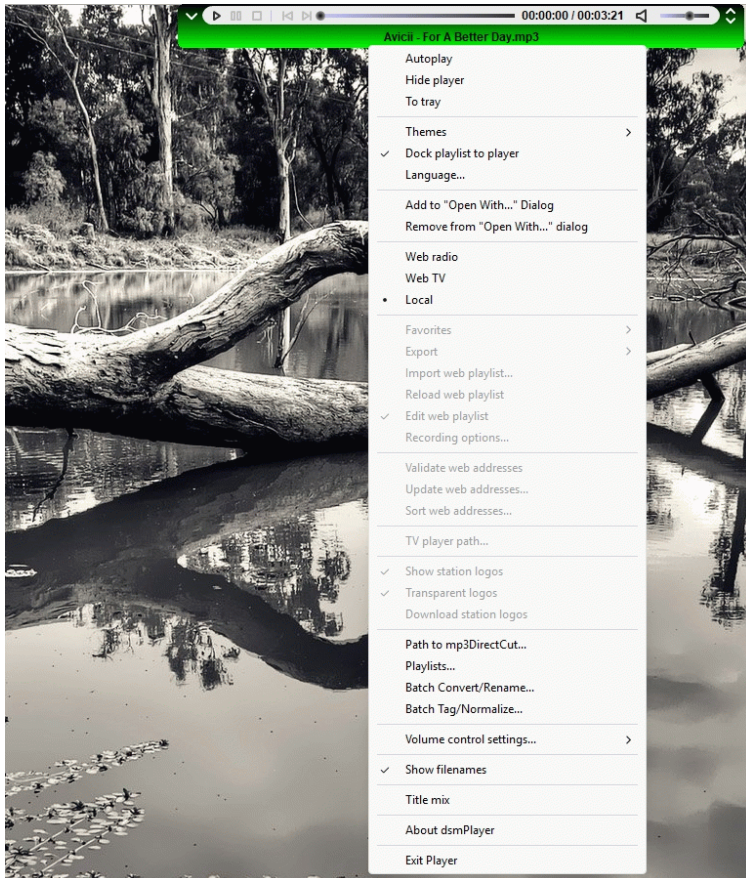


- Open for editing
Open the selected file for editing with your preferred editing program.

In web mode, the country code, station name and genre are displayed. There are 2 further columns for the station url and the icons. These columns are hidden by default, i.e. their column width is set to 0, as they are not normally required.

In edit mode, you can use the right mouse button to cut the selected stations and paste them elsewhere. You also have access to the favorites.

2. The main menu



In the main menu, you can perform all important actions and choose between the different modes:

1. Internet radio
2. Internet TV
3. Local files

2.1. **Autoplay on startup**

If activated, dsmPlayer will continue playing at the start where it left off.

2.2. **Hide player**

This option hides the player so that you have the whole screen free. Nothing is displayed in the tray here either.

To bring it out, left-click anywhere at the top of the screen.

2.3. **To the tray**

This allows the player to be minimized to the tray. The most important actions are available in the tray menu.

2.4. Themes

dsmPlayer currently supports 5 different themes:

- dark
- gray
- green
- blue and
- red

Choose a color for the player.

2.5. Dock playlist

The playlist is shown or hidden with the left arrow in the player.

Normally, the playlist can be positioned freely on the screen.

If you activate this option, the playlist is docked to the player vertically and you can only move the playlist horizontally or change its size.

2.6. Language

dsmPlayer can support other languages. At the moment, however, only English and German are implemented.

Please write a new language file for the player and I will add it.

2.7. Add to "Open with..." dialog

Here you can add dsmPlayer to the "Open with..." dialog under Windows.

2.8. Remove from "Open with..." dialog

Delete dsmPlayer from the "Open with..." dialog.

2.9. Favorites (Web mode)

In the Favorites menu, you can easily jump to a station you have previously added or remove the selected station.

2.10. Export (Web mode)

Here you can export the playlists. There are 3 options available for this:

- as Kodi IPTV station list:

dsmPlayer has 2 separate station lists for TV and radio. When exporting to a Kodi station list, both station lists are merged and the genre is removed for compatibility. The Kodi format is used. Station logos are retained.

- as a mixed IPTV list

The TV and radio station lists are also merged here. The genres and station logos are retained.

- as a pure music playlist

This option creates a standard m3u music playlist. Any station logos contained are not saved. The TV station list is ignored.

2.11. ***Import web playlist (web mode)***

To transfer the data, leave the fields blank!

Country code for all entries

Genre:

Sort and save the playlist

Ignore duplicate station addresses in possibly other genres

Import options:

Only update existing channels

Import new channels and update existing ones

Ok Cancel

This menu item allows you to import a single playlist.

You can specify the country of origin and the genre to be transferred.

If nothing is specified, the entry is taken from the import list, if available.

There are 224 genres available. To simplify matters, not all possible genres have been included, but only those that most stations have. This also applies to the countries. Please excuse this.

- *Sort and save playlist*

Displays the sorting dialog

- *Ignore duplicate station addresses in any other genres*

If a station in the import list has a different genre than in the database, the station is imported as a new station. This means that you have duplicate stations in the station list, but with different genres. This can be useful when sorting by genre. When activated, this is ignored.

- *Only update existing stations*

If a station with the same name already exists in the import list, only the station address and logo will be copied from the new list. New stations are ignored.

- *Import new stations and update existing ones*

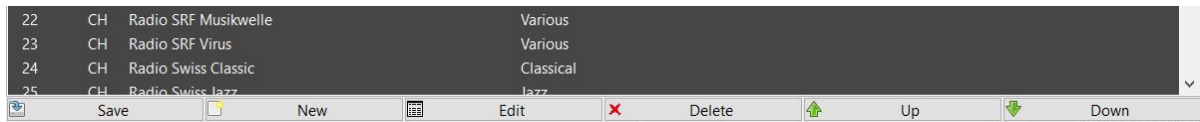
As before, new stations are imported.

2.12. Reload station list (Web mode)

Reloads the station list from the database.

Attention! All changes will be lost if they have not been saved beforehand.

2.13. Edit station list (Web mode)



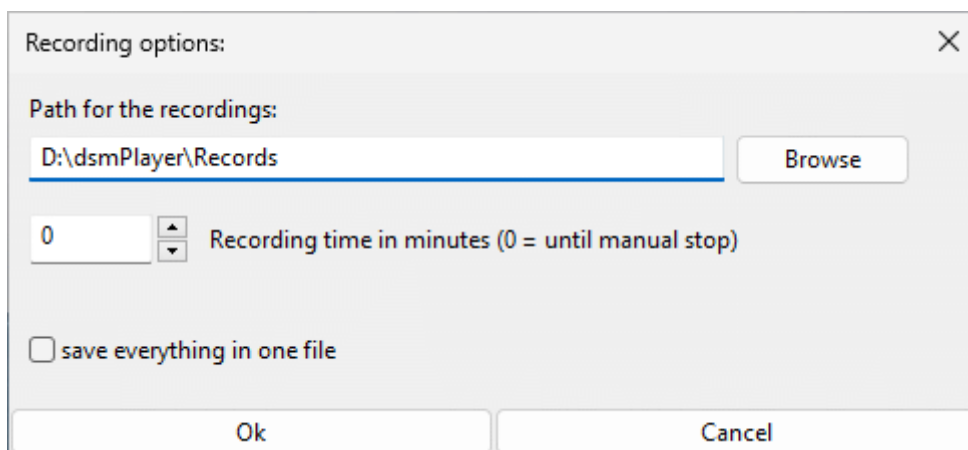
Displays buttons for editing the station lists of the web radio or web TV. This is also the only way to save the station list manually.

| | |
|--------|-------------------------------------|
| Save | Saves the station list |
| New | Creates a new station |
| Edit | Edit the selected station |
| Delete | Delete the selected stations |
| Up | Move the selected stations one up |
| Down | Move the selected stations one down |

Stations can also be moved using drag and drop. Multiple selections are possible.

After editing the station list, it must be saved manually. Otherwise all changes (including sorting) will be lost!

2.14. Recording settings (web mode)



The path for the recordings can be specified here.

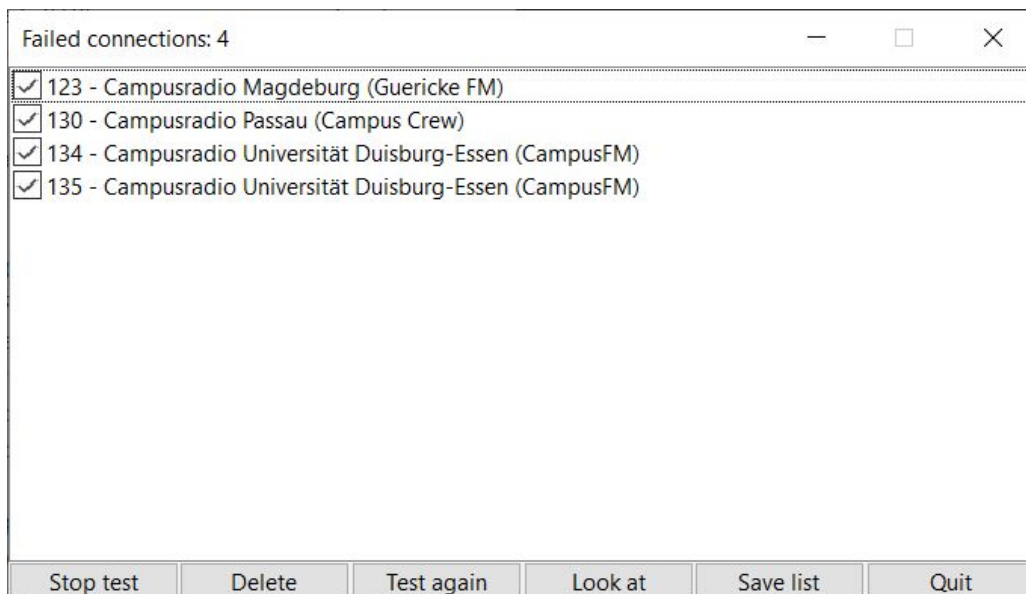
You can also specify a recording duration. This is then ended automatically after the specified time.

Zero means until the manual stop. The recording is made in the "Artist - Title" style.

If "Save all in one file" is activated, the station is recorded in the form of "current date - current time" until the stop.

2.15. Validate web addresses (web mode)

When validating the addresses, an attempt is made to contact the station for 15 seconds. If no contact is established, the station is added to a list of failed stations. From there, the failed stations can be checked again.



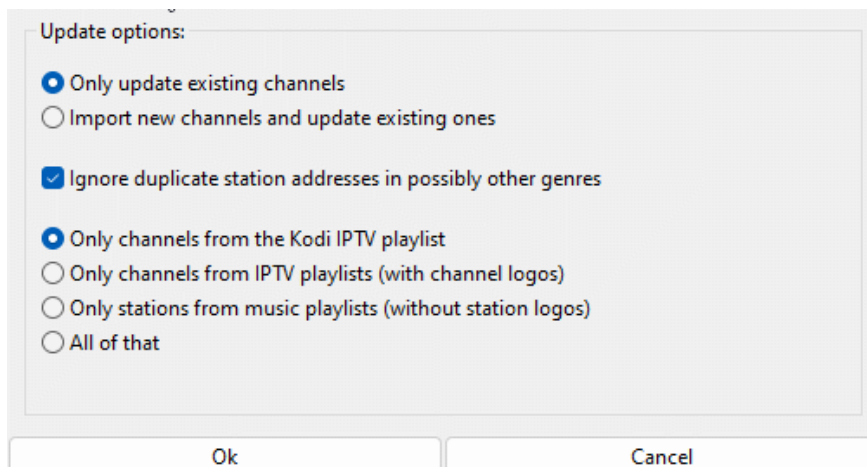
| | |
|-----------|--|
| Stop test | End test |
| Delete | Delete the station from the playlist (Caution!) |
| New test | Retest the stations selected in the list |
| View | Open the selected station for editing |
| Save list | Save the list of failed stations as a text file |
| Quit | Stops the text and closes the window |

Testing is only carried out with the selected stations. If none are selected, all stations in the list are checked. Depending on the size of the list, this may take several hours.

Caution! Testing the connection is only ever a snapshot. Not all stations play at all times of the day.

The station is removed from the station list when it is deleted. To permanently remove a station, it must be saved in the database.

2.16. Update web addresses (web mode)



An existing playlist can be updated here.

The following settings are possible:

- Only update existing

If a station from the import list with the same name already exists, only the station address and the logo are copied from the new list.

New stations are ignored.

- Import new stations and update existing

As before, new stations are imported.

- Ignore duplicate station addresses in any other

If the import of new stations has been permitted and a station in the import list has a different genre than in the database, the station will be imported as a new station. This means that you have stations twice in the station list, but with different genres. This can be useful when sorting by genre.

- Only stations from the Kodi playlist

Only stations from the Kodi repo are updated

- Only stations from IPTV playlists

Only stations from IPTV playlists that can also contain station logos are updated.

- Only stations from music playlists

Only stations from music playlists that do not contain station logos are edited.

All

It is updated from all playlists

Attention! The database will be overwritten when updating. Please make a copy of the database beforehand. dsmPlayer will not do this for you.

2.17. Sort playlist (web mode)



Sort playlist: X

Sort options

By country

By name

By genre

By country and name

By genre and name

By Country, genre and name

Ok Cancel

The playlist can be sorted here according to predefined criteria. The following options are available:

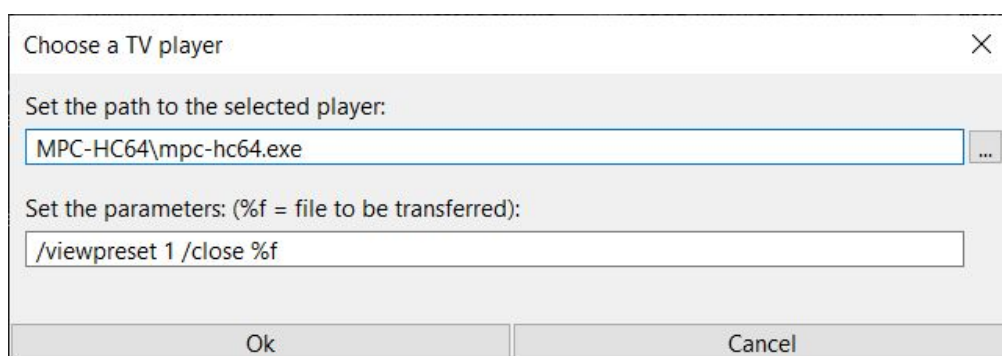
- Sort by country
- Sorting by station name
- Sorting by genre
- Sorting by country and station name
- Sorting by genre and station name
- Sorting by country, genre and station name

It is also possible to sort the list according to the column by clicking on a column heading.

Attention:

For reasons of speed, the database is always used for sorting. For this reason, it is essential to save any changes previously made to the playlist. Otherwise they will be irrevocably lost!

2.18. Path to the TV player (web mode)



When watching web TV, dsmPlayer only acts as a helper and provides the station lists. The actual program for watching the TV stations is defined here, including the required options.

I recommend MPC-HC here. This program has shown the greatest stability in my tests. However, the program can of course be freely selected.

2.19. Show station logos (web mode)

This item can be used to display the station logos. For speed reasons, these are not constantly downloaded from the station's specified website but are loaded from a zip file with the name "stationLogos.zip".

If the zip file is not available, standard logos for radio and TV are used.

2.20. Transparent logos (web mode)

If activated, the station logos have a transparent background. Otherwise, the background is displayed in white.

2.21. Download station logos (web mode)

The station logos of the playlist can be downloaded here. These are then saved

in a zip file with the name "stationLogos.zip".

This has the advantage of saving disk space if there are duplicate logos. If you were to assign them directly to the station in the database, more logos would be saved than necessary.

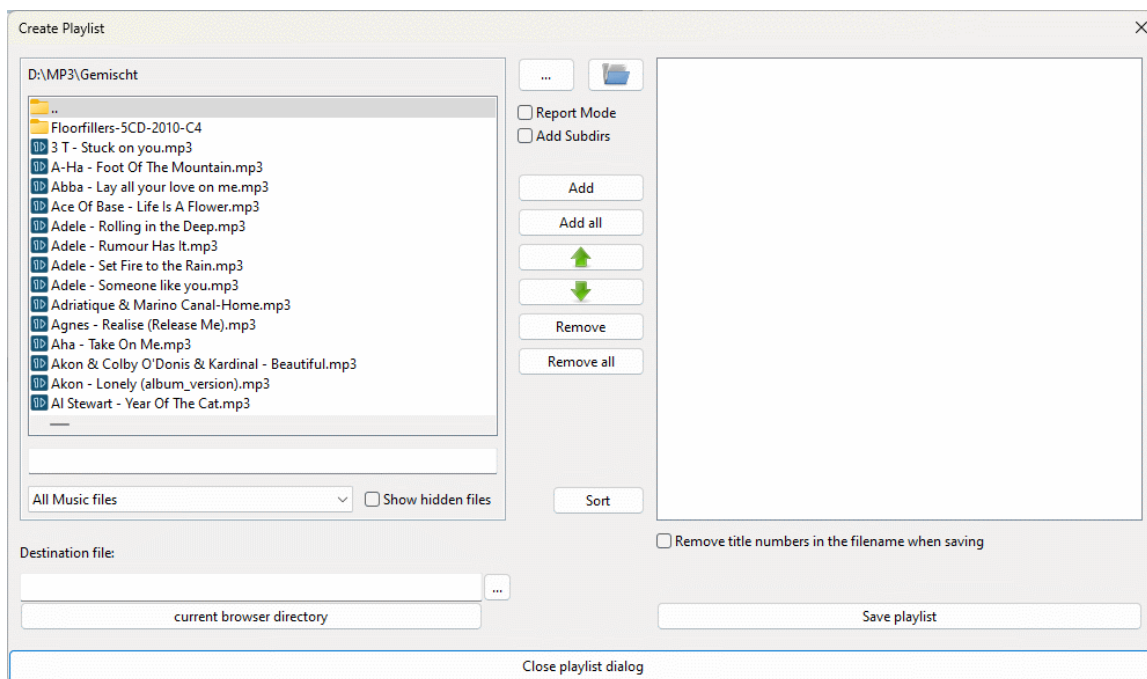
After downloading, the logos are reduced to a size of 24x24 pixels and converted into a png. This png is then saved in the zip file. This means that all logos always have the same format, which speeds up the loading process.

2.22. Path to editor program (file mode)

The path to a editor program is specified here. Otherwise, some the file cannot be opened.

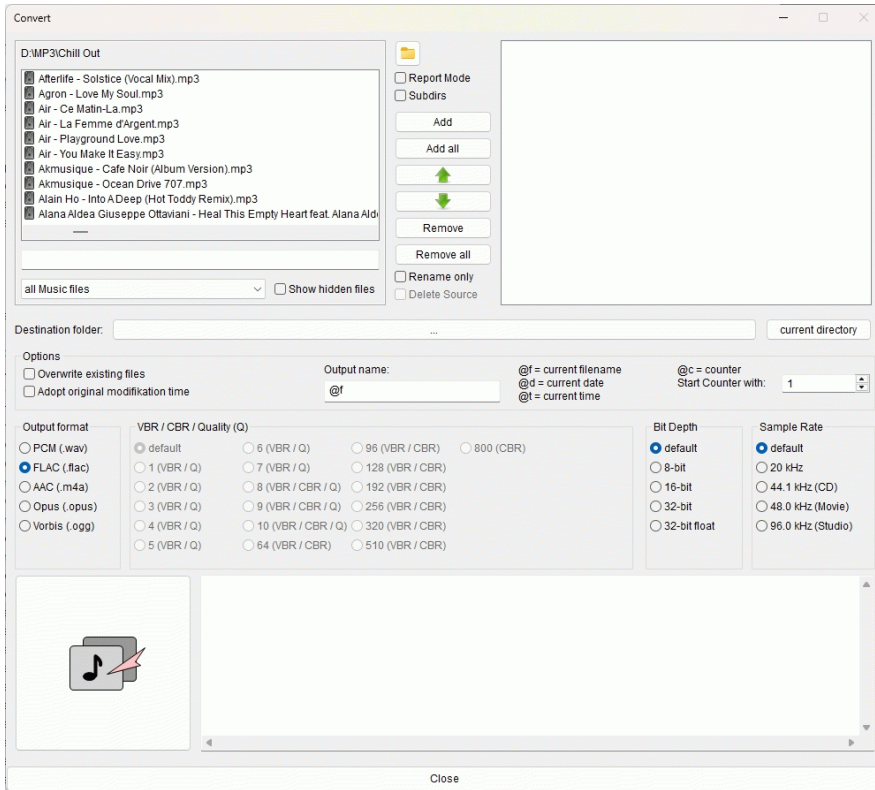
The default is mp3DirectCut. However, you can choose any other program that supports opening via the command line.

2.23. Playlists...



Here you can create or edit music playlists. At the moment only m3u playlists are supported. I think the functions are self-explanatory. Try it out.

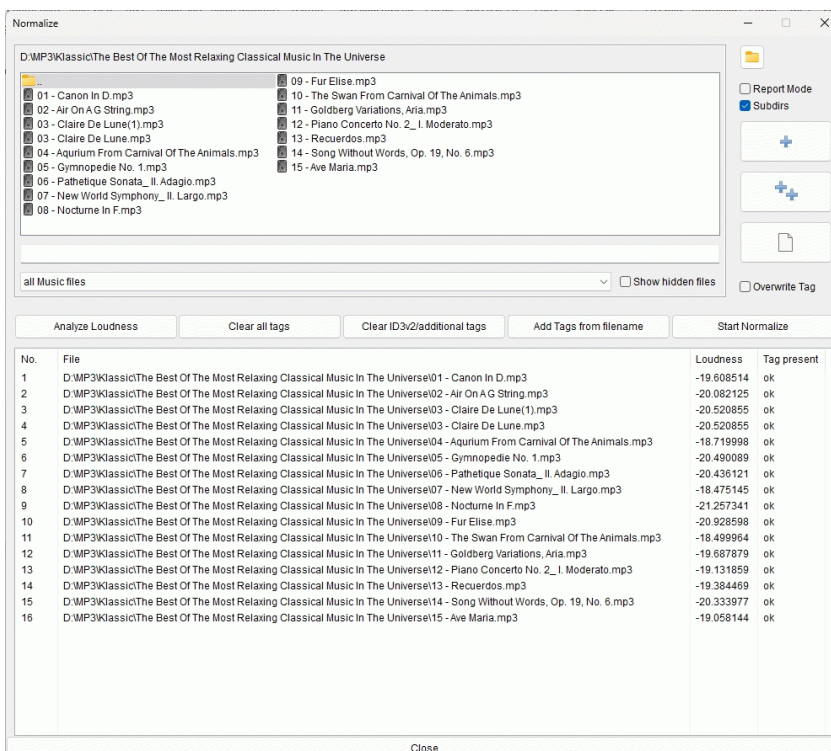
2.24. **Batch Convert/Rename (File mode)**



Select the files to be converted in the explorer window and add them to the task list. There are several setting options available. Placeholders can be used as output titles.

If “Rename Only” is selected, the selected files will only be renamed and copied or moved according to the destination name. In this case, no conversion will take place.

2.25. **Batch Tag/Normalize (File mode)**

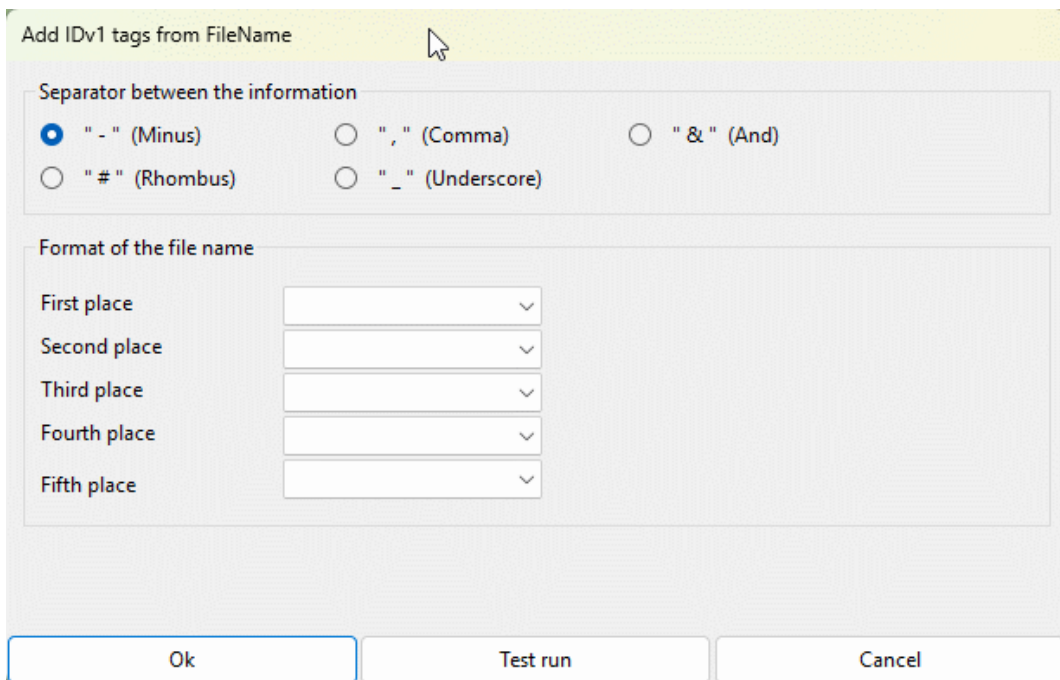


Select the files to be normalized in the explorer window and add them to the task list.

You can analyze the files and display the loudness. However, this does not affect the normalization process.

Here you can also delete all tags present in the files or only the ID3v2 or additional tags. In this case, all tags are deleted and the ID3v1 tags are written back.

You can also create new ID3v1 tags from the file name here.



The file names must use consistent separators. Up to 5 separators can be used for the tags. The order can be specified here.

If you want, you can do a test run. The tags to be written will then be displayed and you can check that they are correct.

“Start Normalize” starts the normalization process. Replay Gain is used, i.e. the file is analyzed and a corresponding tag is written into the file.

2.26. Volume control settings (File mode)

There are 3 variants of volume control to choose from:

1. No volume adjustment
The files are played as saved. Gain tags are not considered.
2. Automatic volume control
Phiola takes control of the volume here.
3. Replay gain tag volume control
The volume is adjusted according to the Replay Gain Tag stored in the file.

2.27. Show file names (File mode)

If activated, the played file names are displayed in the player without having to display the entire playlist. The player is enlarged slightly for this purpose.

2.28. Title mix (file mode)

Mixes up the order of the tracks.

2.29. Exit player

Exits the player and saves the configuration.

3. Key assignment

Some key assignments are preset for operation without a mouse.

Assignment system-wide:

| | | |
|----------|---|----------------------|
| Ctrl - p | - | Play |
| Ctrl - s | - | Stop |
| Ctrl - m | - | Mute |
| Ctrl - n | - | next track |
| Ctrl - b | - | previous track |
| Ctrl - r | - | Start/stop recording |
| F10 | - | Hide player |
| F11 | - | Show player |

Assignment in the program (playlist):

| | | |
|--------|---|--|
| F1 | - | Bring the current track into the field of view |
| F4 | - | Edit station (in edit mode) |
| F7 | - | Add new station (in edit mode) |
| Del | - | Delete station (in edit mode) |
| Escape | - | Cancel selection(s) |

4. Note:

As Phiola is currently only available in 64 bit, dsmPlayer is also only offered as a 64 bit application.

If the default setting contains radio stations that are not legally allowed to be offered, please let me know. I will then remove them from the database immediately.

5. Disclaimer

I have tested the program under Windows 10 and Windows 11. Nevertheless, errors may occur. If errors are found, please let me know.

This software is offered as is. Use at your own risk.

In no event shall the author (Dirk Noack) be liable for any damages whatsoever (including, without limitation, damages for loss of business profits, business interruption, loss of business information, or any other pecuniary loss) arising out of the use of or inability to use this software or documentation, even if the author has been advised of the possibility of such damages.